

This document defines the procedure to add digital images to parts and vehicles in your inventory. This procedure takes place in the Add and Maintain Part dialog box.

### Task 1: Adding Digital Images to a Part

In this task, you will learn how to add an image to an image in Powerlink.

1. In the **Inventory** group, click **Find Parts**, in the Find Parts window, select the Search method, fill in the Search Information fields, and then click **Find**.
2. Double-click the part for which you wish to add a digital image.

**Note:** If custom images already exist for this part, the button says Custom Images.

3. From the **Add and Maintain Part** dialog box, click **Add Images** or press <Alt-G>.
4. In the **Custom Images** dialog box, click **Add Image** or press <Alt-I>.

**Note:** If you receive an error indicating that the image exceeds 1MB, please reset the digital camera's image resolution before contacting Client Services.

5. Navigate to the location of the images and then select the desired images.

**Note:** To select multiple images, press <Ctrl> and then click on the desired images.

6. Click **Open**.

**Note:** The digital images are displayed in the Custom Images dialog box.

7. Click **Close**.

8. To save your changes, click **Apply** or press <Alt-A>.

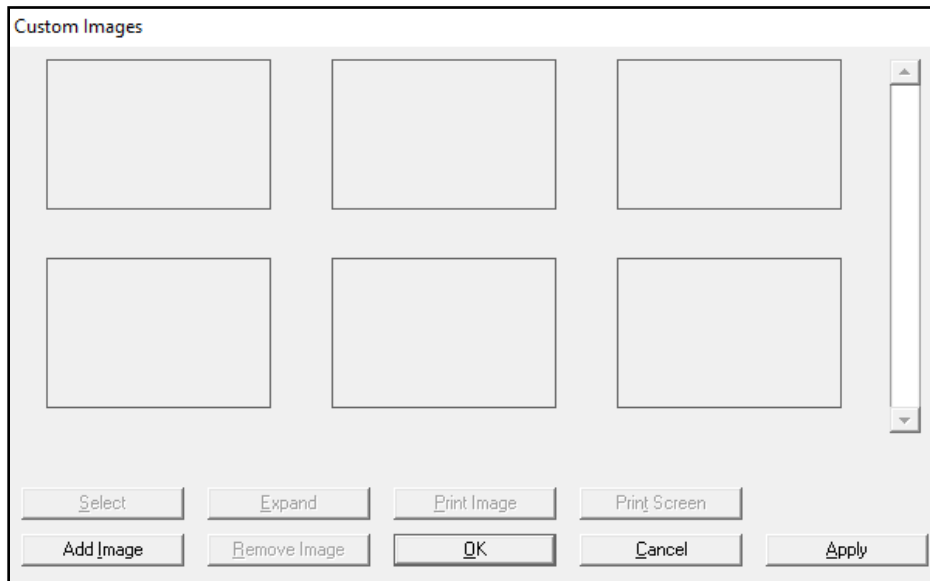
**Note:** The next time you view details for this part, the Add Images button will say Custom Images. Click the Custom Images button to see images for the part.

## Task 2: Adding Digital Images to a Vehicle

Take some photos of the vehicle. You would need to download the images so that they can be added to the vehicle data.

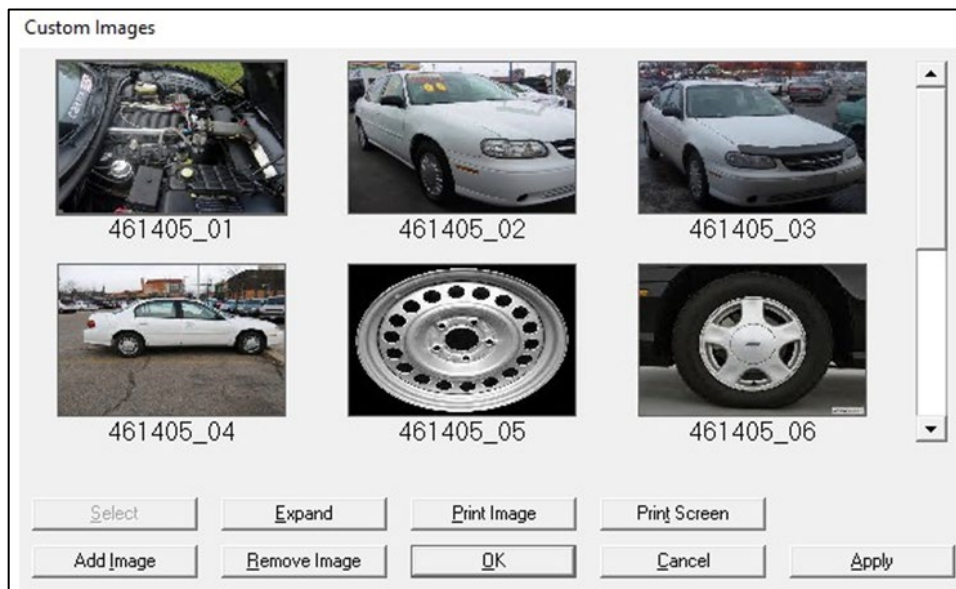
**Note:** *EDEN Pics would be another option to add images to your vehicle data.*

1. At the bottom of the Inventory page, click **Add Images**.
2. The **Custom Images** window opens



3. Click **Add Image** to navigate to where the images have been stored.

**Note:** *You can select multiple images at one time.*



4. Click **Open** to add the images and then click **OK** to save the images to the vehicle details record.

The Vehicle Details record now contains your custom images.