

Table of Contents

Step 1: Complete Pre-Requisite Steps	2
Step 2: Update the Powerlink Server or Primary PC	2
Step 3: Update the Powerlink Workstations	4

All Powerlink Users

Ports 62820, 62821, and 62822 are now being used by Powerlink and should be opened if they are being blocked by any firewall application.

Powerlink version 3.4 is required to be installed before Powerlink version 3.5 can be installed.

The update will install DotNet 4.5.2 if necessary

Window 7 Users

Microsoft support for Windows 7 has ended. Version 3.4 will be the last Powerlink update that will run on Windows 7. Please update Windows 7 computers running Powerlink to avoid problems with future Powerlink updates. For more information, visit:

<https://support.microsoft.com/en-us/help/4057281>

Step 1: Complete Pre-Requisite Steps

Make Sure Your Computers Have the Latest Microsoft Updates

To ensure compatibility and optimal security, we recommend updating your computers with the latest Windows Service Pack and installing any critical updates.

Get the latest Microsoft updates here: <http://update.microsoft.com/windowsupdate/>

Run a Full System Backup

A backup serves as a safety measure in the event you run into problems and need to restore your current files. For assistance, please refer to the Powerlink Help.

Help > Powerlink Help > Admin Help > System Maintenance > Creating the Daily Backup



Need Help? If you have questions or encounter any problems or errors while running the backup, please contact your Network Administrator or Microsoft.

Verify Installation Requirements (Server and Workstations)

- Powerlink version 3.4. To verify, go to **Help/About Powerlink**
- High-speed internet connection (DSL, Cable, or T1)
- Administrator Permissions
- 8GB+ of FREE hard disk space



Need Help? See Windows Help (Start>Help) for more information on checking available drive space and permission levels.

Step 2: Update the Powerlink Server or Primary PC

From the Powerlink server or Primary PC, login as an Administrator.

1. Close all programs.
2. [Click here to download the Powerlink Update.](#)

WARNING: This download is being provided to you as a licensed user. Distribution is strictly prohibited.

3. Do one of the following:

To	Do the following:
Run update now	Click Run to download the file, and then click Run to start the software update. Continue to Step 6.
Save to desktop & run later	<ol style="list-style-type: none">Click Save and browse to the desired location. To make the update easy to find later, save it to your desktop.Click OK.When you're ready to run the update, log into the Powerlink Server or Primary PC as an Administrator user.Browse to the location of the saved Setup.exe file.Double-click on the file and select Run to download the file.Click Run to start the software update.Continue to Step 5.

4. Click **Next**.

5. Click **Next** again.

Read the License Agreement, select **I accept the terms of the license agreement**, and then click **Next**.

6. The **Setup Status** dialog box displays and the installation process begins.

Please wait! The installation process is updating the Powerlink server or Primary PC. Throughout this step, several informational messages display. On larger databases, this step could take several hours to complete, you must allow it to complete without interruptions.

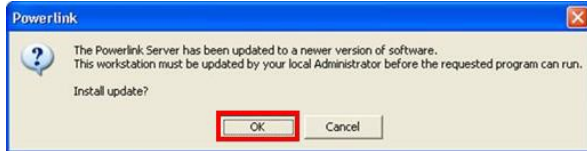
You may see the following message: "This update may take a significant amount of time to download. You must allow it to complete."

This is due to the download or installation of the PartsMaster database.

7. Click **Finish** to complete the installation process.

Step 3: Update the Powerlink Workstations

The first time you open Powerlink from a workstation, you will be prompted to automatically uninstall and reinstall Powerlink (Administrator permissions required). Click **OK** and follow the on-screen prompts to automatically update the workstation to the newest version of Powerlink.



To Contact Us

Support via email: hollandersupport@audatex.com

Support via phone: (800) 825-0092

For other training, download, and support materials go to <https://my.hollandersolutions.com>